

After studying this Master you:

- have the competences to recognise, analyse, and respond to sustainability challenges
- can design, conduct and evaluate sustainability assessments (for policy-making)
- are able to operate at the interface of science, policy and society

Career prospects

The ambition of this Master of Science programme in Sustainability Science and Policy (MSc SSP) is that students learn to cope with sustainability challenges from an integrated perspective (in order to support policy-making), and that they become well-qualified, interdisciplinary professionals in the field of sustainable development. The need for and value of this new Master programme is clearly expressed by different stakeholders in policy-making (all governance levels), representatives of the business community, non-governmental organisations, international scientific organisations and other institutions for higher education.

The intention (and expectation) of this MSc SSP is that a vast majority of its graduates will find a position at governmental, non-governmental, and business organisations, and that in their professional practice they can fulfil functions such as policy-maker, sustainability coordinator, analyst of strategic

policy and strategies, and consultant in sustainability issues. Some graduates might consider a scientific career at a research institute or university, through a PhD-traject. The MSc SSP provides a good preparation for students who want to apply for the Maastricht University Graduate School of Sustainability Science (MUST) interdisciplinary PhD programme in Sustainability Science, Policy and Practice (SSPP) at Maastricht University.

Application

The starting date of this new programme is September 2011. Please make sure you keep an eye on our website for all up-to-date information on application procedures and requirements!

Admission is based on merit as assessed by the Board of Admissions. We welcome students from a variety of backgrounds and experiences. Students range from bachelor's and master's students to mid-career professionals with different cultural and disciplinary backgrounds. The Board of Admissions aims to recruit highly motivated students with strong academic records and a demonstrated commitment to sustainable development.

The application form and associated materials must be received by the deadline published on the website. In the meantime, for the latest information regarding application and admission, you are kindly requested to contact us.

085 7650 Print & online/Oce Business Services, Maastricht



www.icis.unimaas.info

Based in Europe, focused on the world. Maastricht University is a stimulating environment. Where research and teaching are complementary. Where innovation is our focus. Where talent can flourish. A truly student oriented research university.

Contact information

International Centre for Integrated assessment & Sustainable development (ICIS)
 Maastricht University
 P.O. Box 616
 6200 MD Maastricht
 The Netherlands

Phone: +31 43 388 2662
 E-mail: master-ssp@maastrichtuniversity.nl
 Website: www.icis.unimaas.info

More information about the MSc SSP programme

The MSc SSP is an initiative of the International Centre for Integrated assessment and Sustainable development (ICIS), a research institute at the Faculty of Humanities and Sciences (FHS) at Maastricht University (UM). For more information about the programme: www.icis.unimaas.info

New Master of Science (MSc) in Sustainability Science and Policy (SSP)

Start September 2011



International Centre for Integrated assessment and Sustainable development (ICIS) at Maastricht University



Sustainable development' – reconciling society's developmental goals with the planet's environmental limits over the long term – has emerged as one of the central challenges facing humanity in the 21st century. **Sustainability science and policy** requires a long term perspective and system's thinking in order to understand the dynamic interconnections between the environment, economy and society. There is an urgent need for scholars and professionals who are trained in interdisciplinary and **integrative approaches** towards sustainable development, enabling them to assess and deal with the complexity involved from a **system's perspective**. This new Master (intended start academic year 2011/2012) will create a unique opportunity for students to specialize in sustainability science and policy, and especially in **sustainability assessment**, through an interdisciplinary curriculum in an international ambience.

“Learn to cope with sustainability challenges from an integrated perspective”

Master of Science in Sustainability Science and Policy (MSc SSP)

The new one-year Master of Science in Sustainability Science and Policy (MSc SSP) has its own unique character, composed of its integrative and interdisciplinary approach embedded in an international context, and its focus on methods and tools for integrated knowledge production and sustainability assessment (for policy).

The new Master provides an intensive programme where students will acquire knowledge and skills to deal with one of the world's most relevant and complex questions: how can we balance ecological, economic, and social developments for our present and future well-being?

The ambition of this new SSP Master programme is that students learn to cope with sustainability challenges from an integrated perspective. The focus of the programme is a systematic integration of knowledge, methods and tools that provide a sound basis for identifying, analyzing and addressing sustainability problems. The Master explicitly focuses on sustainability assessment, and its potential integrative role in a policy context. An important feature of this Master is that students learn to design, conduct, and evaluate sustainability assessments (for policy). During the Master the students will acquire competences (knowledge, skills, and attitudes) to function as well-qualified, interdisciplinary professionals in the field of sustainable development, both at theoretical level and practical level.

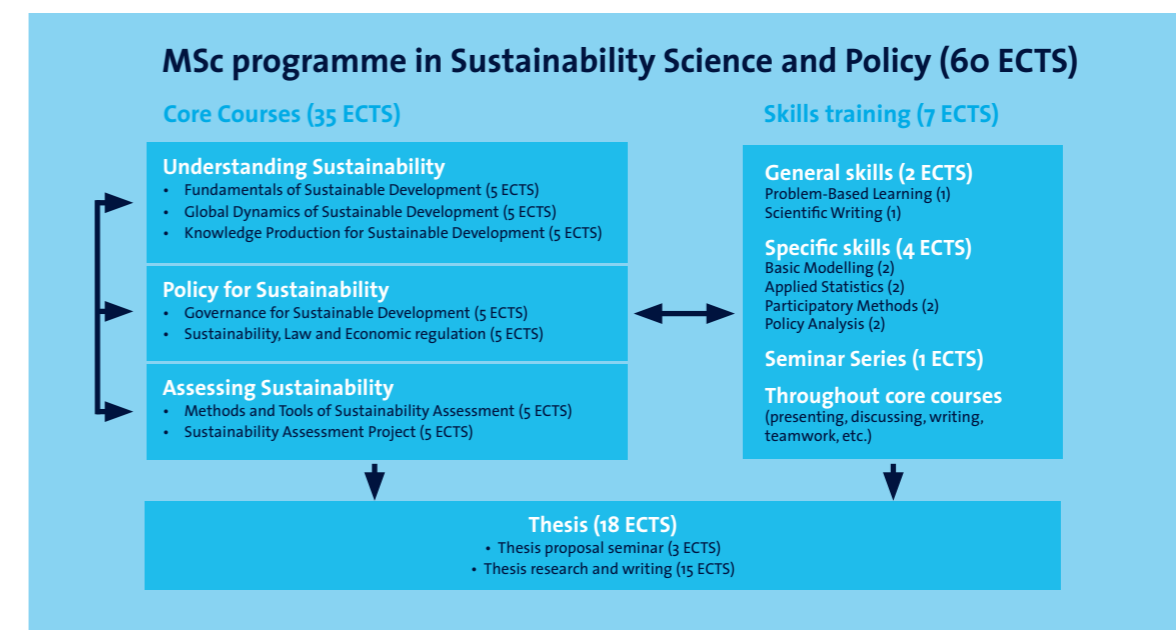
The aim of this Master is to educate students into sustainability professionals, who:

- have the competences – based on a thorough academic understanding of interdisciplinary and integrative approaches towards sustainable development – to recognise, analyse, and respond to sustainability challenges,
- can design, conduct and evaluate sustainability assessments (for policy-making) in collaboration with other disciplines and stakeholders,
- are able to operate at the interface of science, policy and society.

Characteristics of the SSP-programme:

- societal highly relevant topic
- professional oriented approach
- international, multidisciplinary classroom with small groups
- teaching by researchers
- tailor-made thesis
- 1-year programme (60 ECTS)

MSc SSP programme structure



The programme consists of three themes that are characteristic for its design: 'Understanding Sustainability', 'Policy for Sustainability', and 'Assessing Sustainability'.

Four core courses - 'Fundamentals of Sustainable Development', 'Global Dynamics of Sustainable Development', 'Governance for Sustainable Development', and 'Sustainability, Law and Economic regulation' - will together provide the scientific base in sustainable development as well as in policy-making within the context of sustainable development. Subsequently, the programme will focus on 'Sustainability Assessment'. This means that students will learn to design, conduct, and evaluate sustainability assessments for policy-making in the pursuit of sustainable development. For this, three core courses are central: 'Knowledge Production for Sustainable Development', 'Methods and Tools of Sustainability Assessment', and 'Sustainability Assessment Project'.

The core courses are complemented by the skills training and Master thesis. Through their Master thesis, students will make use of knowledge, methods and tools acquired during the programme, especially in the field of integrated sustainability assessment. Content wise, the thesis will focus on a real-world sustainability issue, where a sustainability assessment might contribute to a more integrated approach for policy-making in the pursuit of sustainable development.

Educational Format:

Problem Based Learning

Problem-Based Learning (PBL) makes the Maastricht system 'student-centred' instead of 'teacher-centred': students work in small groups of circa 10-15 people, with staff, complementary lectures and teaching material close at hand to help them. PBL is very well-suited for teaching courses on sustainability (assessment), as it is problem-driven rather than theory-driven, and requires students to be active and participatory rather than

passive. It implies small-scale teaching and intensive group work, which are essential when tackling real-life problems that can only be adequately addressed from an integrated perspective. As the MSc SSP attracts students from different nationalities and disciplines, the resulting international, multidisciplinary learning environment enriches the discussions between students (and staff) and fosters social learning.

The PBL format contributes to the development of a number of personal characteristics that are essential for scholars and professionals in the field of sustainable development, such as: sense of responsibility, critical attitude, eye for the distinction between facts and values, respect for opinions of others, capability of making decisions, and integrated problem handling.

SSP profile

The qualifications of the graduates of this Master programme will be founded on a solid academic base in interdisciplinary and integrative approaches towards sustainable development. The Master programme seeks to deliver graduates that can design, conduct and evaluate sustainability assessments, mostly in an interdisciplinary or transdisciplinary context. Graduates of this Master can fulfil the role of producer and/or user of integrated knowledge about sustainability issues. Based on this profile, the graduate will be able to fulfil a coordinating and binding role in the analysis of sustainability challenges, by building bridges between different disciplines, domains, sectors and actors. Therefore the graduate will have to collaborate in heterogeneous teams (e.g. different disciplines), but also across borders (e.g. between science and policy). Important here is that the graduate knows how to place his/her professional practice in the ongoing scientific and socio-political debate on sustainable development. The competences that the student develops during the Master programme will make him/her capable to contribute to the pursuit of sustainable development in a constructive and critical way.

